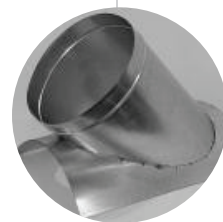
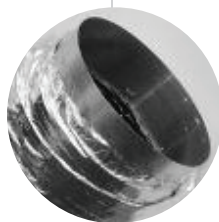
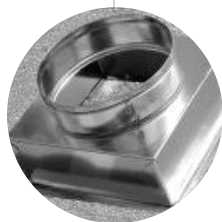




STOCK ITEM CATALOG



210 NORTH PASEDNA STREET
GILBERT, AZ 85233



CUSTOMER JOB INFORMATION SHEET

CUSTOMER INFORMATION

Customer Name

Address

City • State • Zip

Contact

Phone

JOB INFORMATION

Job Name

Address

City • State • Zip

Purchase Order #

Requested Delivery Date

Special Instructions

2

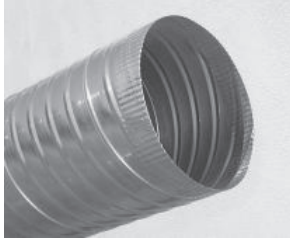
Please email completed form to Nicole Slusher at nicole@kolstenindustrial.com
or mail to our Corporate address: 210 N. Pasedena St., Gilbert, AZ 85233

*On Federally Funded projects Surety Bond Information is Required.

CATALOG INDEX

Item Description	Page #
Spiral Pipe	4
Adjustable Elbows	5
T-Wyes	6
Damper Sleeves	7
Reducers	8
Tapers	8
Saddle Taps	9
Ceiling Boxes	10
End Caps	10
Start Collars	11
Flex Duct	12
Aluminum Flex	13
Duct Tape	14
Drill Screws	14
Hanger Strap	14
Duct Wrap	14
Duct Sealer	14

S-10 PIPE (10' LENGTHS)



8.5" wide strip, corrugated, crimped one end. S-10 (SMACNA) pipe is a lightweight yet very economical product used in most low pressure (2" static/water column) or less applications. Our SMACNA pipe (S10) is corrugated four times in between each spiral lockseam to increase the rigidity of the pipe. It is the lowest cost pipe we offer and it is very easy to handle and drill screws into. The consistent factory crimp eliminates the need for a coupling, reducing material & labor costs.

Size	Gauge	Part #	QTY
6"	28	S10-B-06	
7"	28	S10-B-07	
8"	28	S10-B-08	
9"	28	S10-B-09	
10"	28	S10-B-10	
12"	28	S10-B-12	
14"	28	S10-B-14	
16"	26	S10-C-16	
18"	26	S10-C-18	
20"	26	S10-C-20	
22"	26	S10-C-22	
24"	26	S10-C-24	
26"	24	S10-D-26	
28"	24	S10-D-28	

S PIPE (7.5' LENGTHS)



8.5" wide strip, corrugated, crimped one end. S pipe is a lightweight product used in low pressure (less than 2" static/water column) applications. It is factory crimped and is a great substitute to K.D. pipe of aluminum flex. 7.5' lengths make it easy to will call in standard pick-up trucks or transport up freight elevators.

Size	Gauge	Part #	QTY
6"	28	S-B-06	
7"	28	S-B-07	
8"	28	S-B-08	
9"	28	S-B-09	
10"	28	S-B-10	
12"	28	S-B-12	
14"	28	S-B-14	
16"	26	S-C-16	
18"	26	S-C-18	
20"	26	S-C-20	
22"	26	S-C-22	
24"	26	S-C-24	
26"	24	S-D-26	
28"	24	S-D-28	

90° - 4 GORE



90 Degree, 4 gore adjustable assembly from 3" to 20" diameters. 22" Diameter and above are 90 degree, 5 gore adjustable assembled. Crimped one end.

*Stainless Steel and Aluminum available upon request

Size	Gauge	Part #	QTY
3"	26	90-C-03	
4"	26	90-C-04	
5"	26	90-C-05	
6"	26	90-C-06	
7"	26	90-C-07	
8"	26	90-C-08	
9"	26	90-C-09	
10"	26	90-C-10	
12"	26	90-C-12	
14"	24	90-D-14	
16"	24	90-D-16	
18"	24	90-D-18	
20"	24	90-D-20	
22"	24	90-D-22	
24"	24	90-D-24	
26"	24	90-D-26	
28"	22	90-E-28	

45° - 2 GORE



45 Degree 2 gore adjustable assembly from 3" to 20" diameters., 22" Diameter and above are 45 degree, 3 gore adjustable assembled. Crimped one end.

*Stainless Steel and Aluminum available upon request

Size	Gauge	Part #	QTY
3"	26	45-C-03	
4"	26	45-C-04	
5"	26	45-C-05	
6"	26	45-C-06	
7"	26	45-C-07	
8"	26	45-C-08	
9"	26	45-C-09	
10"	26	45-C-10	
12"	26	45-C-12	
14"	24	45-D-14	
16"	24	45-D-16	
18"	24	45-D-18	
20"	24	45-D-20	
22"	24	45-D-22	
24"	24	45-D-24	
26"	24	45-D-26	
28"	22	45-E-28	

STOCK T-WYES

KOLSTEN



All stock T-Wyes are spot welded with female/male/male ends. They are fabricated from galvanized steel meeting ASTM-A-653-96 standards.

Custom sizes and gauges available upon request.

Available with Jiffy dampers installed upon request.

Size	Gauge	Part #	QTY
6x6x6	26	Y-C-060606	
8x8x6	26	Y-C-080806	
8x8x8	26	Y-C-080808	
10x10x6	26	Y-C-101006	
10x10x8	26	Y-C-101008	
10x10x10	26	Y-C-101010	
12x12x6	26	Y-C-121206	
12x12x8	26	Y-C-121208	
12x12x10	26	Y-C-121210	
12x12x12	26	Y-C-121212	
14x14x8	26	Y-C-141408	
14x14x10	26	Y-C-141410	
14x14x12	26	Y-C-141412	

Size	Gauge	Part #	QTY
16x16x8	26	Y-C-161608	
16x16x10	26	Y-C-161610	
16x16x12	26	Y-C-161612	
16x16x14	26	Y-C-161614	
18x18x10	26	Y-C-181810	
18x18x12	26	Y-C-181812	
18x18x14	26	Y-C-181814	
18x18x16	26	Y-C-181816	
20x16x16	26	Y-C-201616	
20x18x16	26	Y-C-201816	

SLEEVE - DAMPER



Sleeves are diameter plus 1" for overall length with 1.5" stand off, 3/8" aluminum rod with tack welded had sections and SB138 open end bearing. Sleeve is crimped on one end. All discs are 18 gauge. All sleeves fabricated from galvanized steel meeting ASTM-A-653-96 standards.

Size	Gauge	Part #	QTY
6"	24	DS1.5-06	
7"	24	DS1.5-07	
8"	24	DS1.5-08	
9"	24	DS1.5-09	
10"	24	DS1.5-10	
12"	24	DS1.5-C-12	
14"	24	DS1.5-D-14	
16"	24	DS1.5-D-16	
18"	24	DS1.5-D-18	

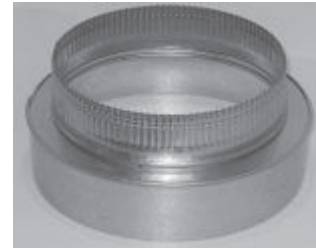
3-PIECE REDUCERS



Stock 3-piece reducers have a 6" taper and 3" long collars on both ends. All 3-piece reducers are fabricated from galvanized steel meeting ASTM-A-653-96 standards in accordance with SMACNA gauge and construction standards.

Size	Gauge	Part #	QTY
6x4	26	R06-C-0604	
6x5	26	R06-C-0605	
8x6	26	R06-C-0806	
8x7	26	R06-C-0807	
9x7	26	R06-C-0907	
9x8	26	R06-C-0908	
10x6	26	R06-C-1006	
10x7	26	R06-C-1007	
10x8	26	R06-C-1008	
10x9	26	R06-C-1009	
12x8	26	R06-C-1208	
12x9	26	R06-C-1209	
12x10	26	R06-C-1210	
14x8	26	R06-C-1408	
14x9	26	R06-C-1409	
14x10	26	R06-C-1410	
14x12	26	R06-C-1412	

PANCAKE TAPERS

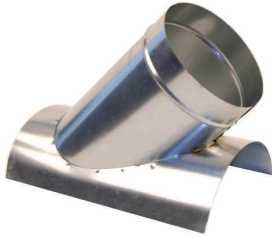


Pancake tapers are 4" high, crimped on small end. All pancake tapers are fabricated from galvanized steel meeting ASTM-A-653-96 standards in accordance with SMACNA gauge and construction standards.

Size	Gauge	Part #	QTY
8x6	26	PT-C-0806	
8x7	26	PT-C-0807	
10x8	26	PT-C-1008	
10x9	26	PT-C-1009	
12x8	26	PT-C-1208	
12x9	26	PT-C-1209	
12x10	26	PT-C-1210	
14x10	26	PT-C-1410	
14x12	24	PT-D-1412	

16x10	24	R06-D-1610	
16x12	24	R06-D-1612	
16x14	24	R06-D-1614	
18x14	24	R06-D-1814	
18x16	24	R06-D-1816	
20x16	24	R06-D-2016	
20x18	24	R06-D-2018	
22x20	24	R06-D-2220	
24x22	24	R06-D-2422	

SADDLE TAP ON ROUND

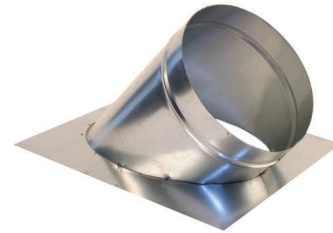


Saddle taps on round have a 45 degree branch and are fabricated from galvanized steel meeting ASTM-A-653-96 standards in accordance with SMACNA gauge and construction standards.

*Jiffy dampers installed upon request

Size	Gauge	Part #	QTY
6 on 10	26	STCR45-C-0610	
8 on 10	26	STCR45-C-0810	
8 on 14	26	STCR45-C-0814	
8 on 16	26	STCR45-C-0816	
10 on 12	26	STCR45-C-1012	
10 on 14	26	STCR45-C-1014	
10 on 16	26	STCR45-C-1016	
12 on 14	26	STCR45-C-1214	
12 on 16	26	STCR45-C-1216	
12 on 18	26	STCR45-C-1218	
14 on 16	26	STCR45-C-1416	
14 on 18	26	STCR45-C-1418	
14 on 20	26	STCR45-C-1420	
16 on 18	24	STCR45-D-1618	
16 on 20	24	STCR45-D-1620	
18 on 20	24	STCR45-D-1820	
18 on 24	24	STCR45-D-1824	

SADDLE TAP ON FLAT



Saddle taps on flat have a 45 degree branch and are fabricated from galvanized steel meeting ASTM-A-653-96 standards in accordance with SMACNA gauge and construction standards.

*Jiffy dampers installed upon request

Size	Gauge	Part #	QTY
6"	26	STCF45-C-06	
8"	26	STCF45-C-08	
10"	26	STCF45-C-10	
12"	26	STCF45-C-12	
14"	26	STCF45-C-14	
16"	24	STCF45-D-16	
18"	24	STCF45-D-18	

STOCK CEILING BOXES & END CAPS

CEILING BOXES



Ceiling boxes have a 4" high can plus a 3" high collar and a plaster ground. Fabricated from galvanized steel meeting ASTM-A-653-96 standards in accordance with SMACNA gauge and construction standards.

Size	Gauge	Part #	QTY
6x6x5	26	CB-060605	
6x6x6	26	CB-060606	
8x8x6	26	CB-080806	
8x8x7	26	CB-080807	
8x8x8	26	CB-080808	
10x10x6	26	CB-101006	
10x10x8	26	CB-101008	
10x10x10	26	CB-101010	
12x12x6	26	CB-121206	
12x12x8	26	CB-121208	
12x12x10	26	CB-121210	
12x12x12	26	CB-121212	
14x14x10	26	CB-141410	
14x14x12	26	CB-141412	
14x14x14	26	CB-141414	
16x16x14	26	CB-161614	
18x18x12	24	CB-181812	
18x18x14	24	CB-181814	
18x18x16	24	CB-181816	
20x20x16	24	CB-202016	

END CAPS



End caps are 2" high, male end. Fabricated from galvanized steel meeting ASTM-A-653-96 standards in accordance with SMACNA gauge and construction standards.

Size	Gauge	Part #	QTY
5"	26	EC-C-05	
6"	26	EC-C-06	
7"	26	EC-C-07	
8"	26	EC-C-08	
9"	26	EC-C-09	
10"	26	EC-C-10	
12"	26	EC-C-12	
14"	26	EC-C-14	
16"	24	EC-D-16	
18"	24	EC-D-18	
20"	24	EC-D-20	
22"	24	EC-D-22	
24"	24	EC-D-24	
26"	24	EC-D-26	

DOVETAIL START COLLAR



Dovetail start collars are 5" high, crimped on one end. Fabricated from galvanized steel meeting ASTM-A-653-96 standards.

Size	Gauge	Part #	QTY
4"	26	SC-4	
5"	26	SC-5	
6"	26	SC-6	
7"	26	SC-7	
8"	26	SC-8	
9"	26	SC-9	
10"	26	SC-10	
12"	26	SC-12	
14"	26	SC-14	
16"	26	SC-16	
18"	26	SC-18	
20"	26	SC-20	
22"	26	SC-22	
24"	26	SC-24	
26"	26	SC-26	

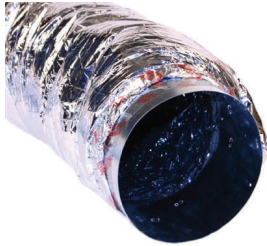
AIR-TITE START COLLAR



Air-Tite start collars are 6" high with a 1.5" wide flange with adhesive gasket material, crimped on one end. Fabricated from galvanized steel meeting ASTM-A-653-96 standards with spot welded seams.

Size	Gauge	Part #	QTY
6"	26	ATSC-06	
7"	26	ATSC-07	
8"	26	ATSC-08	
9"	26	ATSC-09	
10"	26	ATSC-10	
12"	26	ATSC-12	
14"	26	ATSC-4	
16"	26	ATSC-16	
18"	26	ATSC-18	
20"	26	ATSC-20	

6' LENGTH WITH COLLARS



Foil-faced flexible duct manufactured by JPL with a durable, scuff-resistant foil jacket, 1.5" thick blanket of fiberglass insulation, fiberglass threaded mesh, full internal poly liner which completely shields the air flow from fiberglass erosion and encapsulated, galvanized-coated, hard drawn spring wire.

R-value 6.0 UL-181 Class air duct, NFPA 90A and 90B

Size	Length	Part #	QTY
5"	6'	SAF6-05	
6"	6'	SAF6-06	
7"	6'	SAF6-07	
8"	6'	SAF6-08	
9"	6'	SAF6-09	
10"	6'	SAF6-10	
12"	6'	SAF6-12	
14"	6'	SAF6-14	
16"	6'	SAF6-16	
18"	6'	SAF6-18	
20"	6'	SAF6-20	

25' LENGTH



Foil-faced flexible duct manufactured by JPL with a durable, scuff-resistant foil jacket, 1.5" thick blanket of fiberglass insulation, fiberglass threaded mesh, full internal poly liner which completely shields the air flow from fiberglass erosion and encapsulated, galvanized-coated, hard drawn spring wire.

R-value 6.0 UL-181 Class air duct, NFPA 90A and 90B

Size	Length	Part #	QTY
5"	25'	SAF25-05	
6"	25'	SAF25-06	
7"	25'	SAF25-07	
8"	25'	SAF25-08	
9"	25'	SAF25-09	
10"	25'	SAF25-10	
12"	25'	SAF25-12	
14"	25'	SAF25-14	
16"	25'	SAF25-16	
18"	25'	SAF25-18	
20"	25'	SAF25-20	

INSULATED ALUMINUM FLEX



Aluminum flex has a durable scuff-resistant silver foil jacket with a 1.5" thick blanket of fiberglass insulation. Joints are 6' long with collars on both ends.

R-value 6.0 UL-181 Class air duct, NFPA 90A and 90B

Size	Length	Part #	QTY
5"	6'	OFD3-05	
6"	6'	OFD3-06	
7"	6'	OFD3-07	
8"	6'	OFD3-08	
9"	6'	OFD3-09	
10"	6'	OFD3-10	
12"	6'	OFD3-12	
14"	6'	OFD3-14	
16"	6'	OFD3-16	
18"	6'	OFD3-18	

BARE ALUMINUM FLEX



Bare aluminum flex with no insulation. 3" - 4" diameters are 10' long with raw ends. 5" - 14" diameters are 6' long with collars on both ends.

Size	Length	Part #	QTY
3"	10'	OFD110R-03	
4"	10'	OFD110R-04	
5"	6'	OFD1-05	
6"	6'	OFD1-06	
7"	6'	OFD1-07	
8"	6'	OFD1-08	
9"	6'	OFD1-09	
10"	6'	OFD1-10	
12"	6'	OFD1-12	
14"	6'	OFD1-14	
16"	6'	OFD1-16	
18"	6'	OFD1-18	

STOCK ACCESSORIES



Screws	QTY
Drill Screw #10 x 1/2", 500pc	
Drill Screw #10 x 3/4", 500pc	

Hanger Strap	QTY
26 Ga. - 1.5" x 80' roll	
26 Ga. - 1.5" x 80' roll with holes	
24 Ga. - 1.5" x 80' roll	

Duct Tapes	QTY
Polyken 339 Aluminum	
Tyco 555M Black Flex Fit	
Tyco 555M Silver Flex Fit	
Polyken 557 Metalized	
Polyken 557 Black	
Polyken 558CA	

Fiberglass Duct Wrap	QTY
1" x 36" x 150' roll	
1" x 36" x 150' wrap (9" cuts)	
DP77 Spray Glue for Insulation	

Duct Sealants	QTY
DP1010 - 1 Gallon	
DP1010 - 10.67 Oz Tube	
DP1020 - 1 Gallon	
DP1020 - 10.67 Oz Tube	
Disposable Chip Brush	